

# INSTALLING THE NULAB SOFT PROOF PROFILE

If you wish to precisely colour correct your own images, and want to ensure that your prints match the on-screen image, you should also install and use the Nulab Soft Proof Profile as follows:

## FOR PC USERS

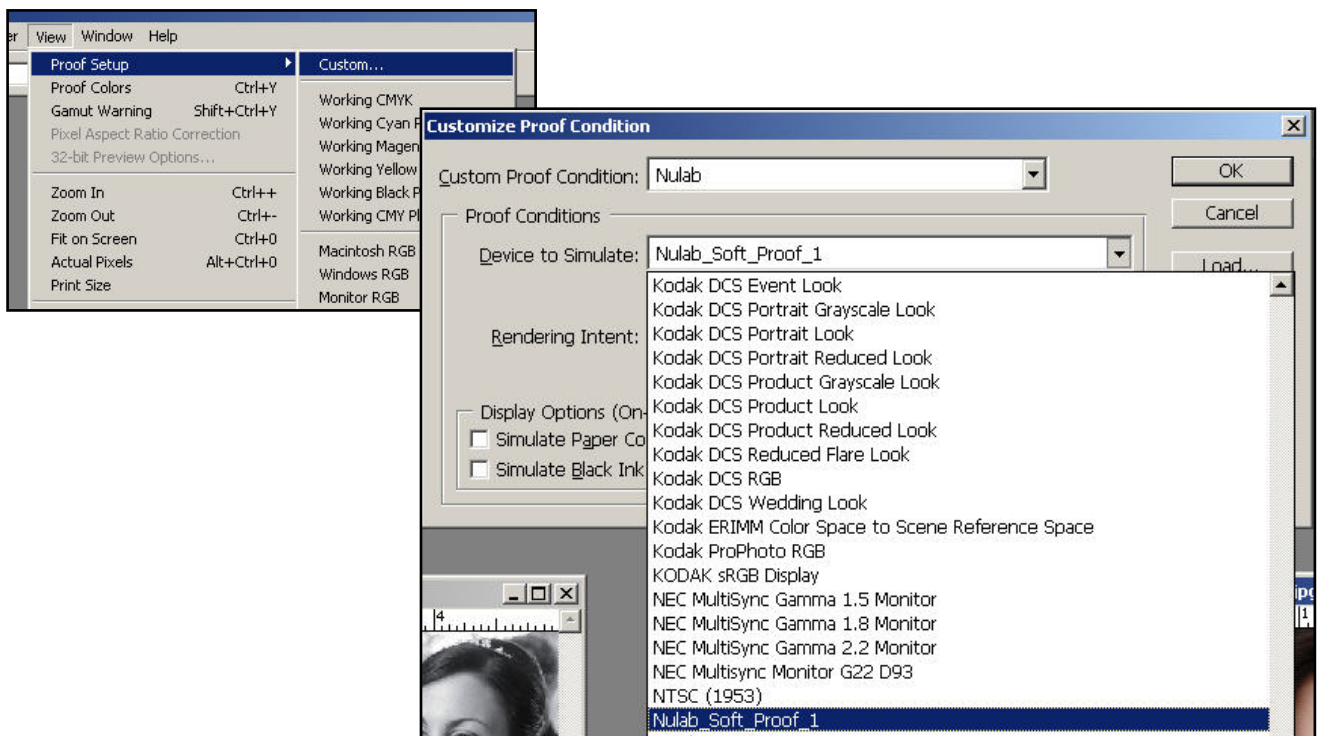
1. Go to [www.nulab.com.au](http://www.nulab.com.au) > Resource > Color Management > Nulab Soft Proof Profile
2. Save Softproof profile to desktop
3. Go to Softproof icon -right click - install

## FOR MACINTOSH USERS

1. Download the Nulab\_Soft\_Proof\_1.icm file onto your desktop.
2. Open Your Hard Disk > System > Library > Colorsync > Profiles folder and copy downloaded file into this location. This will ensure that the Nulab Soft Proof Profile is copied into the correct place on your computer so that whichever User is using Photoshop will be able to access the Nulab Soft Proof Profile.

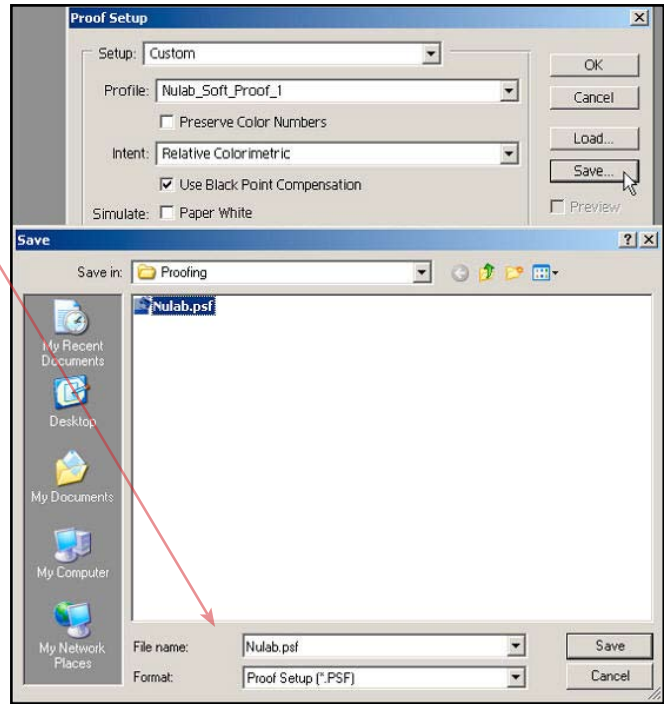
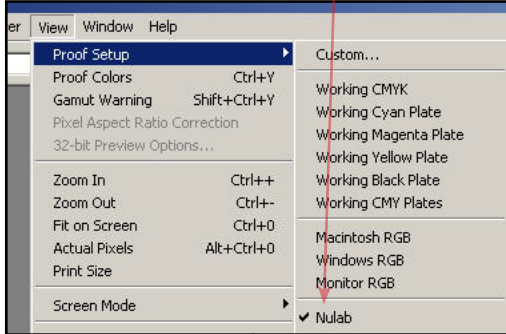
## Setting Up and Using the Nulab Soft Proof Profile

1. Restart Photoshop, open the Nulab calibration print file and move it to the bottom of your screen.
2. Click on View > Proof Setup > Custom, and then under Device to Simulate choose from the long list Nulab\_Soft\_Proof\_1.



Continued overleaf...

- Then choose Save and name this setup **Nulab.psf**. This will place the Nulab Soft Proof Profile as a choice at the bottom of the “Proof Setup” window.
- You can simply choose this for your next soft proof viewing.



- Ensure that you **untick *Preserve Color Numbers*** (or RGB Numbers)
- Rendering Intent should be ***Relative Colorimetric***
- Tick ***Use Black Point Compensation***, but **not Simulate Paper Color and Simulate Black Ink**
- Tick ***Preview***. This should allow you to view your file as it will be printed.

